



Test Report

Applicant	Hangzhou Todaytec Digital Co., Ltd.
Address	Room 3-305 Hongshulin, 207-233 Tiancheng Rd., Jianggan District, Hangzhou, China
Sample Name	Barcode ribbon
Sample Received Date	July 7, 2015
Test Period	July 7, 2015 ~ July 10, 2015
Test Requirement	To determine the certain Hazardous Substances of the submitted sample according to the requirements of RoHS Directive 2011/65/EU (the European Parliament and the Council's Restriction on the use of certain Hazardous Substances in electrical and electronic equipment) and its amendment (EU) 2015/863.

Test Item(s)	Test Result(s)
Lead (Pb), Cadmium (Cd), Mercury (Hg), Hexavalent Chromium (Cr ⁶⁺), PBBs, PBDEs Content	See Test Results
Phthalates Content	See Test Results

Complied by Yoko Ye Inspected by Kale Zhang Authorized by Mark Li
Mark Li/ Lab Manager



Test Component(s):

No.	Sample Serial No.	Test Component(s)
1	TR20152542001	Black solid

Photo(s):



TR20152542



Lead (Pb), Cadmium (Cd), Mercury (Hg), Hexavalent Chromium (Cr⁶⁺), PBBs, PBDEs Content

Test Method: Pb, Cd : IEC 62321-5:2013; Hg: IEC 62321-4:2013; Cr⁶⁺, PBBs, PBDEs: IEC 62321:2008

Test Item(s)	Limit	MDL	Unit	Test Result(s)
				Black solid
Lead(Pb)	1000	5	mg/kg	N.D.
Mercury(Hg)	1000	5	mg/kg	N.D.
Hexavalent Chromium(Cr ⁶⁺)	1000	5	mg/kg	N.D.
Cadmium(Cd)	100	5	mg/kg	N.D.
<u>Sum of Polybrominated Biphenyls (PBBs)</u>	1000	--	mg/kg	N.D.
Monobromobiphenyl		10	mg/kg	N.D.
Dibromobiphenyl		10	mg/kg	N.D.
Tribromobiphenyl		10	mg/kg	N.D.
Tetrabromobiphenyl		10	mg/kg	N.D.
Pentabromobiphenyl		10	mg/kg	N.D.
Hexabromobiphenyl		10	mg/kg	N.D.
Heptabromobiphenyl		10	mg/kg	N.D.
Octabromobiphenyl		10	mg/kg	N.D.
Nonabromobiphenyl		10	mg/kg	N.D.
Decabromobiphenyl		10	mg/kg	N.D.
<u>Sum of Polybrominated Diphenylethers (PBDEs)</u>	1000	--	mg/kg	N.D.
Monobromodiphenyl ether		10	mg/kg	N.D.
Dibromodiphenyl ether		10	mg/kg	N.D.
Tribromodiphenyl ether		10	mg/kg	N.D.
Tetrabromodiphenyl ether		10	mg/kg	N.D.
Pentabromodiphenyl ether		10	mg/kg	N.D.
Hexabromodiphenyl ether		10	mg/kg	N.D.
Heptabromodiphenyl ether		10	mg/kg	N.D.
Octabromodiphenyl ether		10	mg/kg	N.D.
Nonabromodiphenyl ether		10	mg/kg	N.D.
Decabromodiphenyl ether		10	mg/kg	N.D.

Remarks:

1. MDL = Method Detection Limit
2. N.D. = Not detected (<MDL)



Phthalates Content

Test method: EPA 3550C:2007, EPA 8270D: 2007

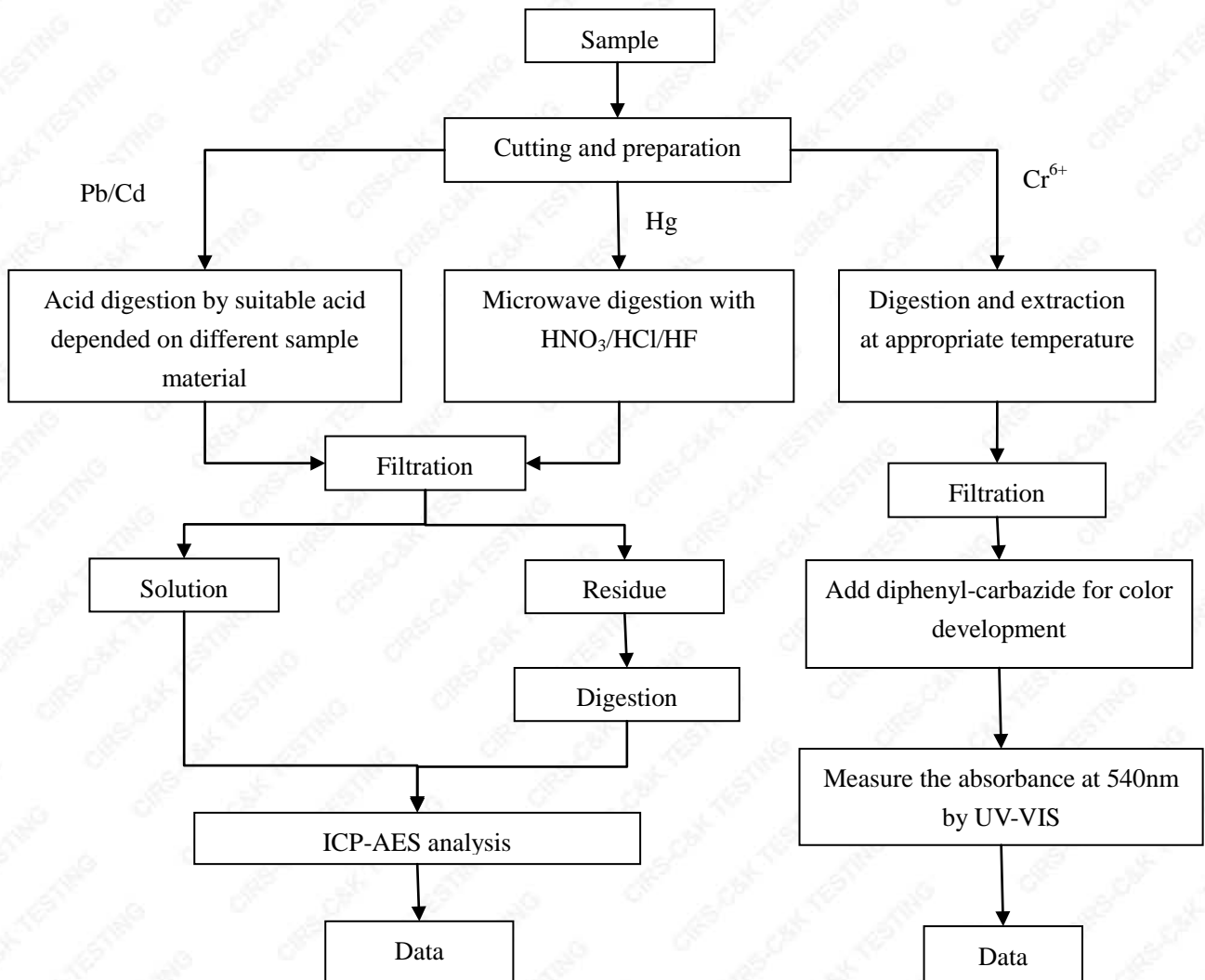
Test Item(s)	CAS No.	Limit	MDL	Unit	Test Result(s)
					Black solid
Dibutyl phthalate (DBP)	84-74-2	1000	10	mg/kg	N.D.
Bis (2-ethyl(hexyl)phthalate) (DEHP)	117-81-7	1000	10	mg/kg	N.D.
Benzyl butyl phthalate (BBP)	85-68-7	1000	10	mg/kg	N.D.
Diisobutyl phthalate (DIBP)	84-69-5	1000	10	mg/kg	N.D.

Remarks:

1. MDL = Method Detection Limit
2. N.D. = Not detected (<MDL)

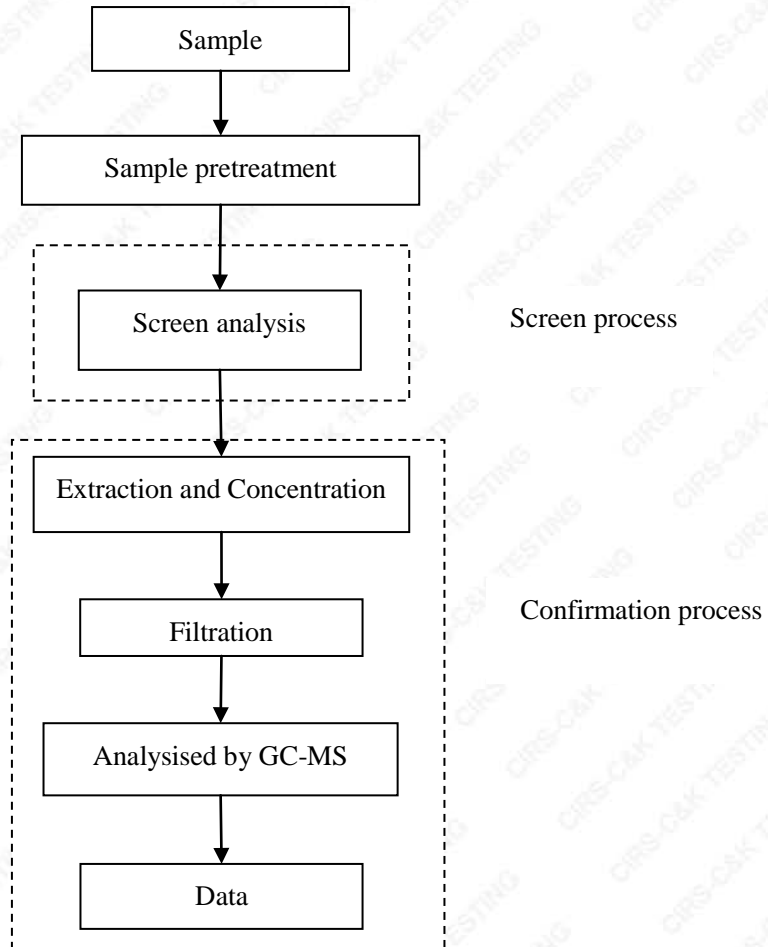


Test Flow Chart for the determination of Pb, Cd, Hg, Cr⁶⁺



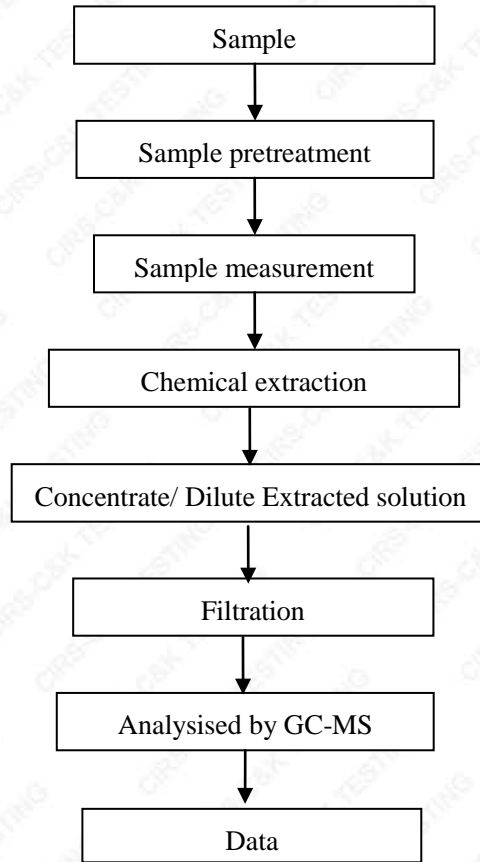


Test Flow Chart for the determination of PBB/PBDE





Test Flow Chart for the determination of Phthalates Content



The end of report